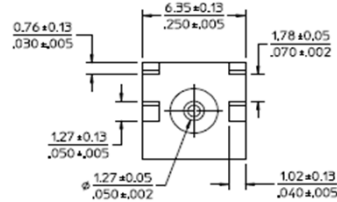


M30

Note: PCB design origin (0,0) places the PCB outline and other locations as indicated below

x	mm	y	mm	
x	110.000	y	-70.000	Top Left Corner
x	110.000	y	-92.000	Bottom Left Corner
x	190.000	y	-70.000	Top Right Corner
x	190.000	y	-92.000	Bottom Right Corner
x	115.000	y	na	J2 centerline
x	185.000	y	na	J1 centerline
x	124.500	y	na	SW 6 centerline
x	134.500	y	na	SW 5 centerline
x	144.500	y	na	SW 4 centerline
x	154.500	y	na	SW 3 centerline
x	164.500	y	na	SW 2 centerline
x	174.500	y	na	SW 1 centerline



Note: +Z reference 0 [zero] is top of PCB. Negative #'s below PCB

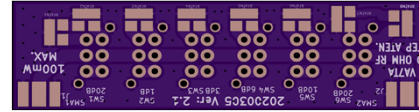
x & y	na	Z	mm	
x & y	na	Z	0.000	Top of PCB
x & y	na	Z	-1.600	Bottom PCB
x & y	na	Z	0.635	Center of J1 & J2
x & y	na	Z	3.810	Top of J1 & J2
x & y	na	Z	-7.100	Center of plungers SW1,2,3,4,5,6 [5.50mm high]
x & y	na	Z	-11.200	Top of SW1-6 [9.60mm high]
x & y	na	Z	-7.390	Width of PCB Assy
x & y	na	Z	-3.695	Centerline of Assy
x & y	na	Z	-3.695	Centerline of top cover relative to PCB

Note: Dimintions below are not referenced to the pcb Assy

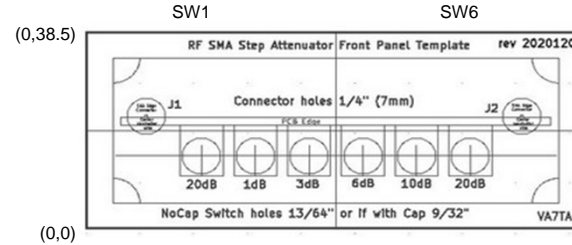
X		Z		
X	82.800	Z	28.500	Distance between top cover mounting holes
X	92.600	Z	38.500	Width of top cover
X	46.300	Z	19.250	Centerline of top cover
X	0.000	Z	28.500	Distance between Vertical screw holes
X	82.600	Z	0.000	Distance between Horizontal screw holes

Note: Original jpg [ref below] is approx 1.535 x too big as rendered in file
Ref: SMA_StepAttenDrillTemplateRev1.jpg

PCB is 80 x 22 mm
Orientation of PCB relative to top cover
(x,y) (190,-92)



Top Left corner as designed
(110,-70)



Note: Spacing between J1 & SW1 center lines 10.5mm
Spacing between J2 & SW6 center lines 9.5mm
Spacing between all SW center lines is 10mm
Spacing between J1 & J2 center lines is 70mm
13/64 = 0.203125 in 5.159375 mm
9/32 = 0.28125 in 7.14375 mm

(x,z) Left Z Axis positions [mm]

(0,38.5)	38.500	Top of Cover
	33.500	Top Screw hole
	22.945	Cline for J1 & 2
(0,19.25)	19.250	Cover Top Center line
	15.845	Cl for Sw 1- 6
	5.000	Bottom Screw hole
(0,0)	0.000	Bottom of Cover

(x,z) Bottom X Axis positions [mm]

(0,0)	5.000	Cover Left side
	6.300	Left Screw hole
	11.300	J1 CL
	21.800	SW1 CL
	31.800	SW2 CL
	41.800	SW3 CL
(46.3,0)	46.300	Top Cover Center Line
	51.800	SW4 CL
	61.800	SW5 CL
	71.800	SW6 CL
	81.300	J2 CL
	87.600	Right Screw hole
(92.6,0)	92.600	Cover Right side